



SLE 400

DECENTRALIZED SMART LASER ENGRAVER





KEY FEATURES

-  Modular components that reduces maintenance.
-  Compact design and small footprint for easy portability.
-  Intuitive touch screen commands that enables ease of operation.
-  Laser Personalization that etches high standard security into cards.
-  Complies with industry standard interfaces world wide.

CARD FEATURES

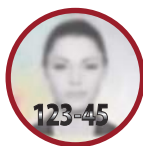
Tactile Surface Relief

Embossed lettering provides evidence of authenticity with a touch of finger.



Multiple/ Changeable

Laser Image (MLI/ CLI)
Engraving images or data with unique viewing angle enhances top quality ID card security.



Sub-surface Image

Engraving ghost image below the top surface, delivers maximum durability.



SPECIFICATIONS

Standard Features

Processor
Memory
Storage
Operating System
Display
Maximum Resolution
View Angle
Card Type
Card Standards

Laser

Type
Speed
Power
Double Sided Printing
Hopper
Stacker

Environment

Temperature
Humidity
Warranty
Laser Personalization Type
Certification

Communication

LAN
USB

Mechanical

Power Consumption
Dimension (L x W x H)(mm)
Weight (kg)

Optional

RFID Feature
Contact Card
SAM Slot
Registration

SLE 400

i5 2.3GHz
4G DDR3
60GB SSD Drive
Window Embedded Standard 7
8" TFT Touchscreen
800 x 600 pixels
Vertical -120°/ Horizontal 140°
PC, ABS, PET, PETG (Laserable Overlay)
CR-80 Only
Pulse Fibre Laser
Up to 400 Cards Per Hour (depending on the density of marking)
10W
Double Sided Printing
400 Cards (Matt finish) / 200 Cards (Glossy finish)
400 Cards
15°C to +40°C
20% to 80% RH, Non-condensing
5,000 Hours Fibre, 2 Years
Sub-surface, Tactile, Micro-text
Class 1 Laser, CE, FCC Part 15
RJ 45
2 USB
250VA
600 x 680 x 557
80
Yes
Yes
1 SAM
CLI & MLI (Camera registration is not CLI and MLI)



www.pradotec-global.com

PRADOTEC CORPORATION

Email: inquiry@pradotec-global.com

Copyright © 2014 Pradotec Corporation. All rights reserved.

